



## COMPANY PROFILE

# Contents

/01

OUR  
COMPANY  
pg 3

/02

OUR  
COMMITMENT  
pg 4

/03

OUR  
TEAM  
pg 5

/04

PROJECT  
INVOLVMENT  
pg 9

/05

Ongoing  
Projects  
pg 10

/06

Designing &  
Engineering  
Works  
pg 21

/07

Nursery  
(Dibba UAE)  
pg 31

/08

Executed Main  
Projects  
pg 32

/09

Executed  
Projects  
JV  
pg 43

/10

Trade License  
pg 51

/11

HSE Policy  
pg 63

# OUR COMPANY

GMC Landscaping is a Dubai based Landscape Architectural Design Consultancy and Execution Company established in 2008, as a new division in GMC Construction Company. We specialize in providing all types of Design & build projects ranging from private villas and large mixed-use developments to boutique style luxury hotels. We pride ourselves in providing truly unique designs which are carefully crafted from the Architectural environment and infused with the spirit and individuality of their site. Our design and execution services include a consulting, concept sketches, comprehensive plans for coordinated execution, and finally custom building the landscape.

Beautiful gardens, water features, grand gazebos, and quaint pergolas, to custom designed pools and outdoor living spaces, our landscaping team is ready to design and transform your space into your private paradise.

With over a decade of industry experience, we possess the skills, passion, resources, industry connections, and rock solid reputation to get the job done on time, within budget, and beyond expectations.

## Our Area of Expertise

- Garden Designs and consultancy services, with all related NOCs (Government and Developers)
- Landscaping execution work, including Hardscape, Softscape, Pools, Water features, Wood work, Lighting and Spa
- Maintenance services: A comprehensive maintenance services all year round with a highly skilled Maintenance team

# OUR COMMITMENT

GMC Landscaping is committed to its brand development strategy and latest technology innovation, which has enabled it to successfully attract talent, as well as providing its customers with high quality services and products by consistently pursuing its corporate mission of "Trustworthy service to clients, High quality returns to shareholders and Consistent out-performance".

In the old construction industry, companies compete to build a project in merely similar conventional ways. GMC Landscaping is here to build your project using the latest innovations in the industry. We do extensive research, studies, and planning before we choose our construction methodologies.

We are committed to be not just your contractor, but also your partner. We know the worries of our Client and we share the same objective: Successful Delivery of the Project Beyond Expectation, Constantly.

## OUR VISION

GMC Landscaping has set a vision to provide a garden area to make our clients comfortable and happy to enjoy the moment with their family. We strive to come across the needs of the world today without risking the needs of the world tomorrow.

## OUR MISSION

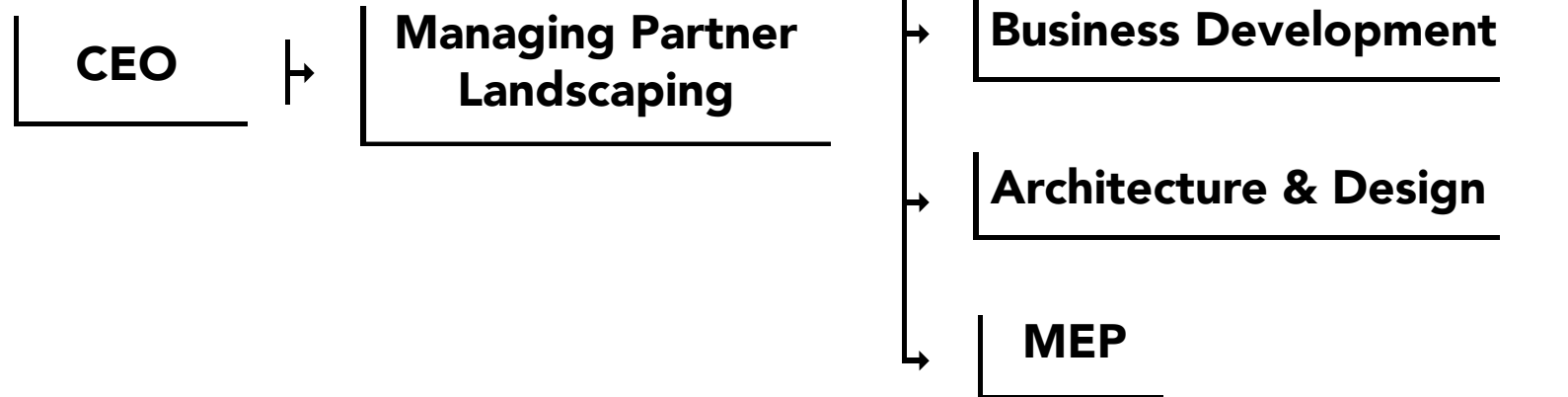
To build an enduring relationship of diligent and value with our clients and partners, using high quality construction, creative engineering solutions, employing the best resource and latest techniques and soaring innovation.

To obtain projects at viable pricing, provide safest working conditions and delivery work at the exact time frame without compromising Quality requirements of the project.

We deal each challenge with innovative, consistent and secure solutions to meet the necessities of our clients and partners. Through multicultural working groups we are able to provide bearable development for our company and the society.



# Our team





**SHADI KUZAM**  
**CEO**

## Education

BACHELOR OF CIVIL ENGINEERING  
AMERICAN UNIVERSITY OF BEIRUT –LEBANON

MSc. PROJECT MANAGEMENT  
MANCHESTER UNIVERSITY (BUiD)

CERTIFIED  
PMP/PSP/EVP/CCP/CEP/LEED GA

# CEO

Having participated in the management of over 100 projects worldwide, his objective is to devote my 25 years of intensive Construction & Project Management experience to the affluence of construction business, the advancement of projects innovation, and the advancement of his career.

## Experience

CHIEF EXECUTIVE OFFICER  
2013 –PRESENT GULF MODERN CONTRACTING -DUBAI

AREA MANAGER  
2013– 2004 COMMODORE CONTRACTING -DUBAI

TECHNICAL DEPARTMENT MANAGER  
2003– 2001 IKK –SAUDI ARABIA

PROJECT ENGINEER | PROJECT MANAGER  
2001– 1994 IBS –SAUDI ARABIA



**DOREID ABO DARGHAM**  
**Managing Partner Landscaping**

**Education**

BACHELOR OF SCIENCE IN AGRICULTURAL ENGINEERING  
LEBANESE UNIVERSITY –LEBANON

CERTIFICATE  
SUPERIOR AGRONOMIC STUDIES –FRANCE

MASTER'S DEGREE  
DIPLOMA OF PROFOUND STUDIES –FRANCE

# Managing Partner Landscaping

More than 10 years of Project Management experience in the United Arab Emirates handling full planning, operational and strategic responsibilities of upscale projects mainly focused on landscaping, including pools, water features, hardscape, softscape, irrigation, etc ... Previous to that, he had 10 years of project management experience in Lebanon with similar capacity

**Experience**

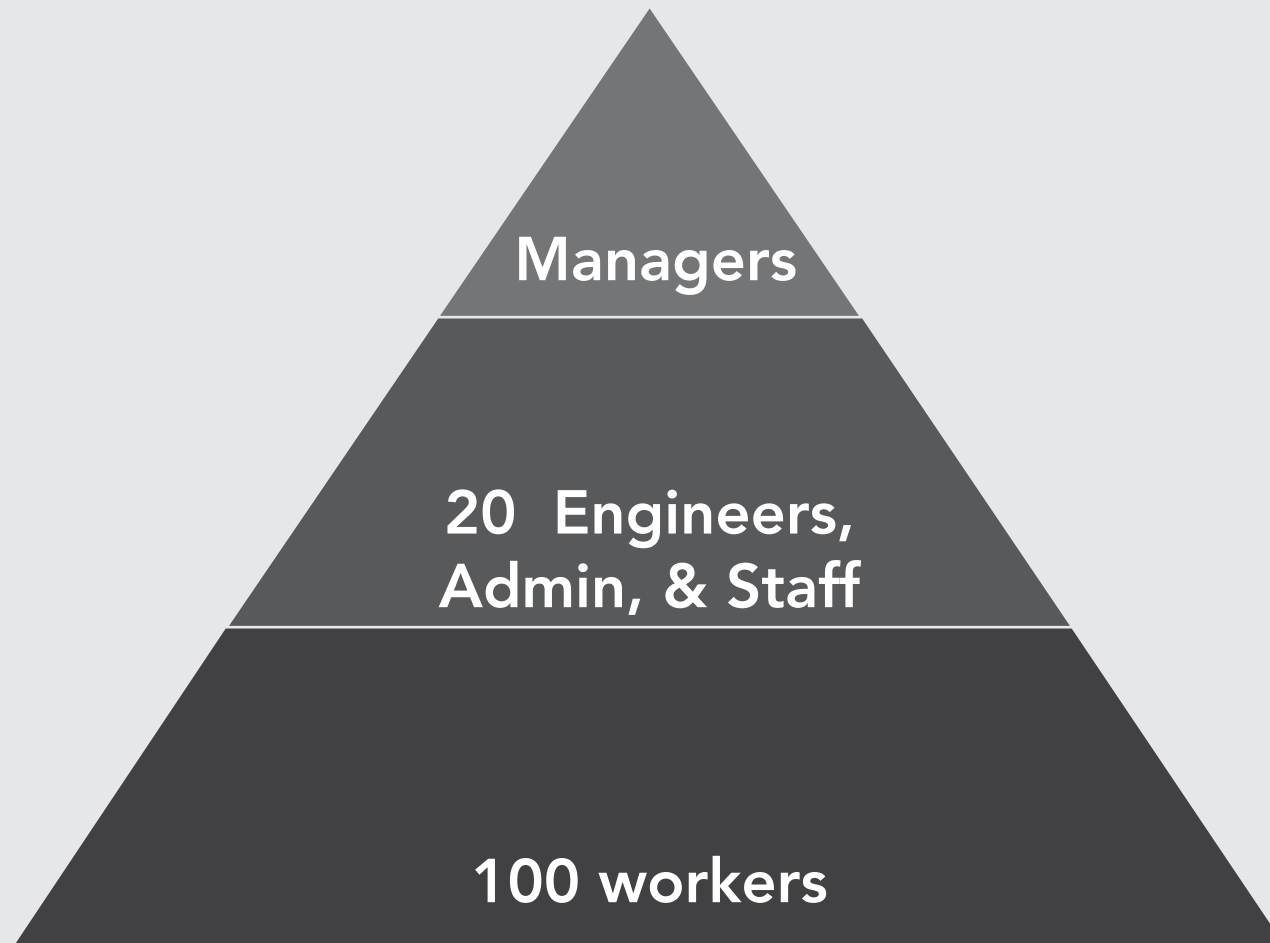
MANAGING PARTNER  
2017 –PRESENT GULF MODERN CONTRACTING –DUBAI

PROJECT MANAGER  
2017– 2015 PHOENICIAN TECHNICAL SERVICES –DUBAI

PROJECT MANAGER  
2014– 2007 EMIRATES WATERTech –DUBAI

PROJECT MANAGER  
2007– 2005 WATERTech –LEBANON

PROJECT MANAGER  
2005– 1997 JANAEN, PRIVATE NURSERY –LEBANON



# GMC

## Project Involvement

### STUDIES & PLANNING

Our team equipped with project managers, planners, cost estimators, quantity surveyors, procurement specialist prepare the execution plans & budgets.



### DETAILED DRAWINGS

We rely on our Engineering Department to produce impeccable detailed drawings. We find solutions to execution coordination problems & we improve the way the project functions.



### DEPLOYMENT

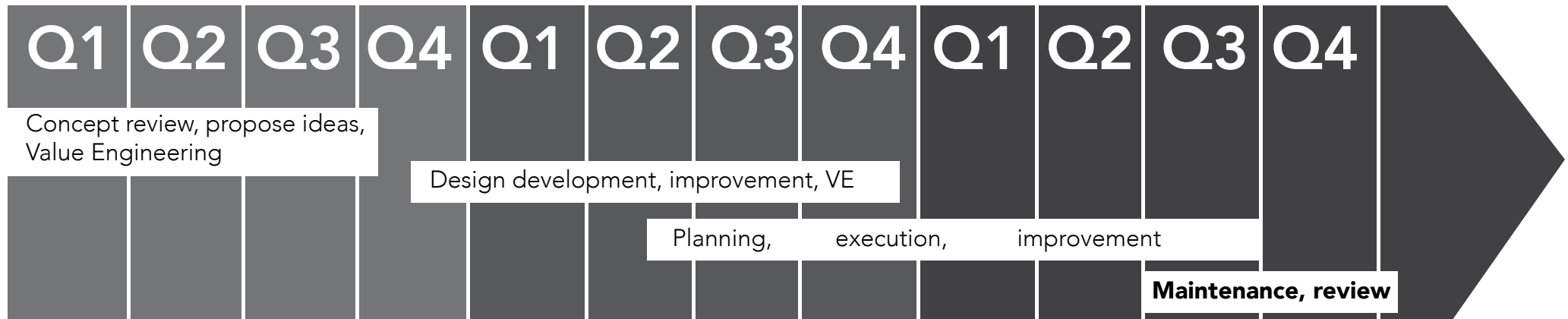
Once the project started, we deploy competent workforce and the right plant & equipment. Our procurement professionals ensure proper delivery of materials and subcontractors to site on time.



### CONTROLS

At all times, we keep strict quality, safety, time, and cost control. We have our advanced tools & techniques.

## Throughout lifecycle Project Lifecycle





# Ongoing Projects

# Ibn Battuta Mall Expansion-Hotel

Working under EWT license, Dubai



Scope: Swimming Pool, Kids Pool & Water Features,  
excuted as a JV



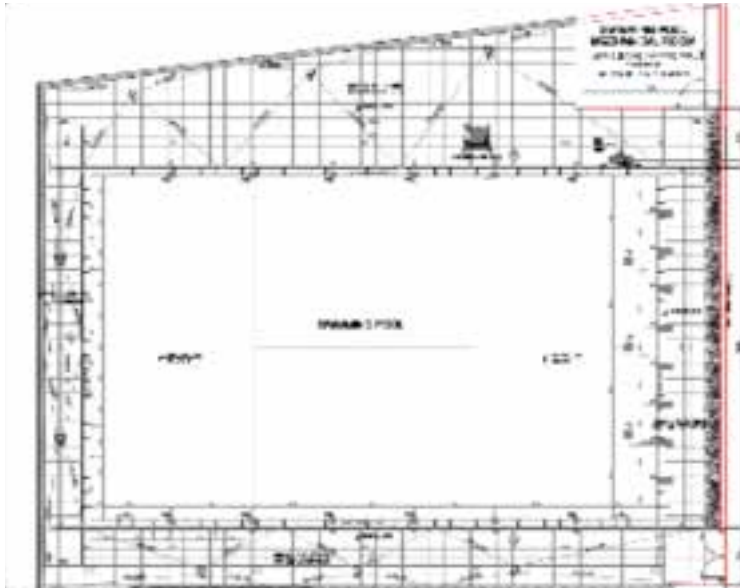
## Villas in Dubai Hills – EMAAR , Parkway vista

Dubai Hills Estate- 90 Villas



Scope: Hardscape & softscape





Scope: Semi-Olympic Pool ( 25 X 12.5 )

# Private Villa, Dubai

Private Villa in Nad Al Shiba



IBDA DESIGN

Scope: Water feature, hardscape and softscaping - Value AED 3M



# Private Villa, Dubai

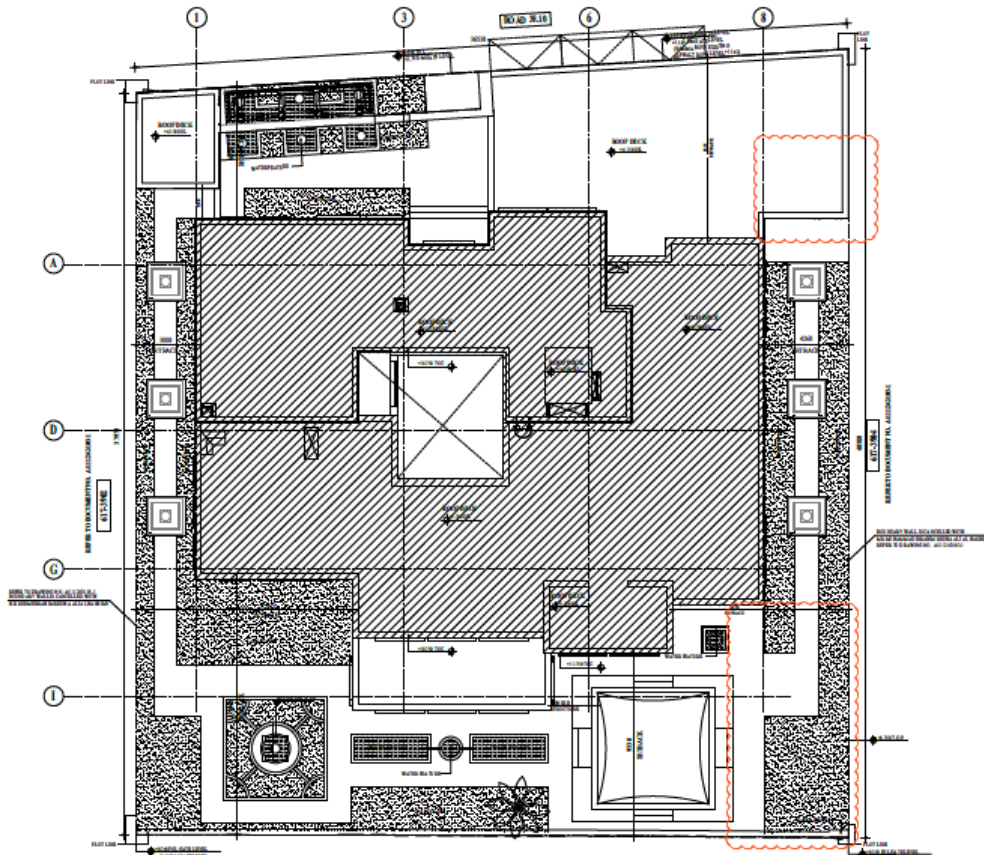
Dubai Hills



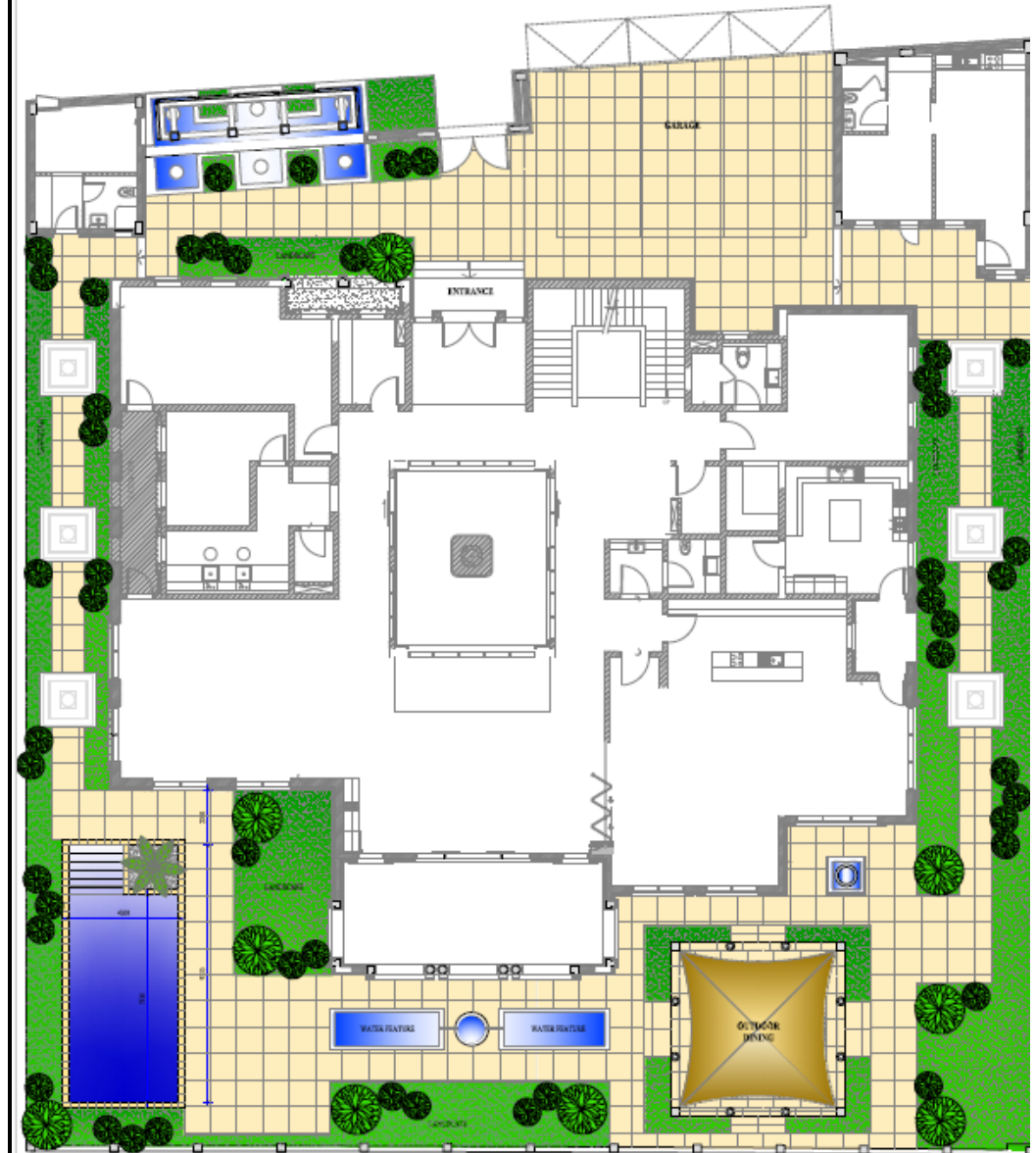
Scope: Design And Building -  
Water features, Softscape And  
Hardscape Works.

# Private Villa 3 Villas

Nad Al Shiba , Dubai



Scope: Design And Building Swimming Pools,  
Softscape And Hardscape





# Al Meshwar Building

Dubai



Scope: Full  
Construction  
Design and built .



# Al Meshwar Building

Dubai



Scope: Artificial rocks (Concrete crafting works)



# Private Villa of Rashed Hamad Al Ktebi

Margham = Value AED 8M



Scope:  
- Design and built  
Landscaping,  
swimming pool  
and water feature

## Private Villa

Dubai - Value 4M



Scope: Scope: Design and built  
, hardscape , softscape and  
swimming pool



# Designing & Engineering Works

## Main Projects

# Villa Bakaata

Al Chouf, Lebanon



Scope: Landscape designing work, pools, hardscape, softscape & irrigation

## Private Villa

Nad Al Sheba , Dubai



Scope: Landscape designing work, pools, hardscape, softscape & irrigation



# Palm Jumeirah Villa

Palm Jumeirah, Dubai



Scope: Landscape designing work, pools, hardscape, softscape & irrigation

# Aley Villa

Aley, Lebanon



Scope: Landscape designing work, pools, hardscape, softscape & irrigation



# Meydan Private Villa 1

Meydan, Dubai



Scope: Landscape designing work, engineering with pools, hardscape, softscape & irrigation

# Meydan Private Villa 2

Meydan, Dubai



Scope: Landscape designing work, engineering with pools, hardscape, softscape & irrigation



## Meydan Private Villa 3

Meydan, Dubai

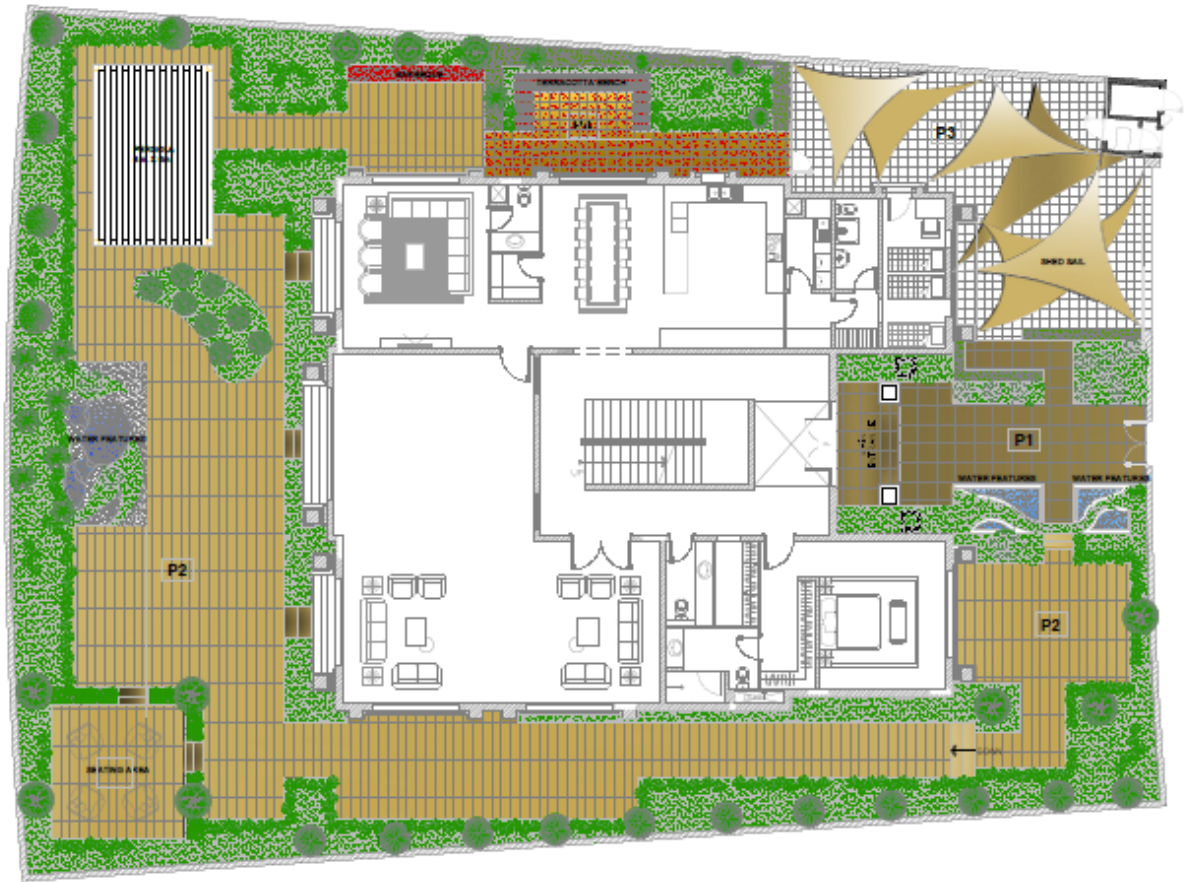


Scope: Landscape designing work, engineering



# Private Villa

Dubai Hills



# Nursery (Dibba UAE)

With a nurseries land located in UAE and plants resources all over the world.( China, Thailand, Spain, Lebanon Egypt) , we can provide a wide selection of plants from the exotic plants to the specimen trees along with standard ornamental species and the native local plants.

Our nurseries have the capacity to meet the demands of the retail and wholesale sectors along with landscape contractors in UAE, we are also able to provide operation and maintenance services all with an experienced team of personnel skilled in the science of nursery and horticulture practices.





Our range of plants includes mature palms and trees imported are acclimatized and then released to the market with our guarantee. We offer a similar service for shrubs, vines and ground covers.

We are committed to being at the forefront of the nursery industry in the region and to contribute positively to the horticultural industry in which we work. We take great satisfaction, enjoyment and pride in our achievements and welcome the opportunity to exchange knowledge and skills with our peers.



# Executed Main Projects

## Villa & Car Museum

Jumeirah, Dubai - Value AED 23M



Scope: Pool & Lanscaping Built

# Villa

Lakes, Dubai



Scope: Pool & Lanscaping Design & Built



# Private Villa

Jumeirah, Dubai



Scope: Pool, Water Features & Landscaping Design & Built

# Villa

Meydan, Dubai

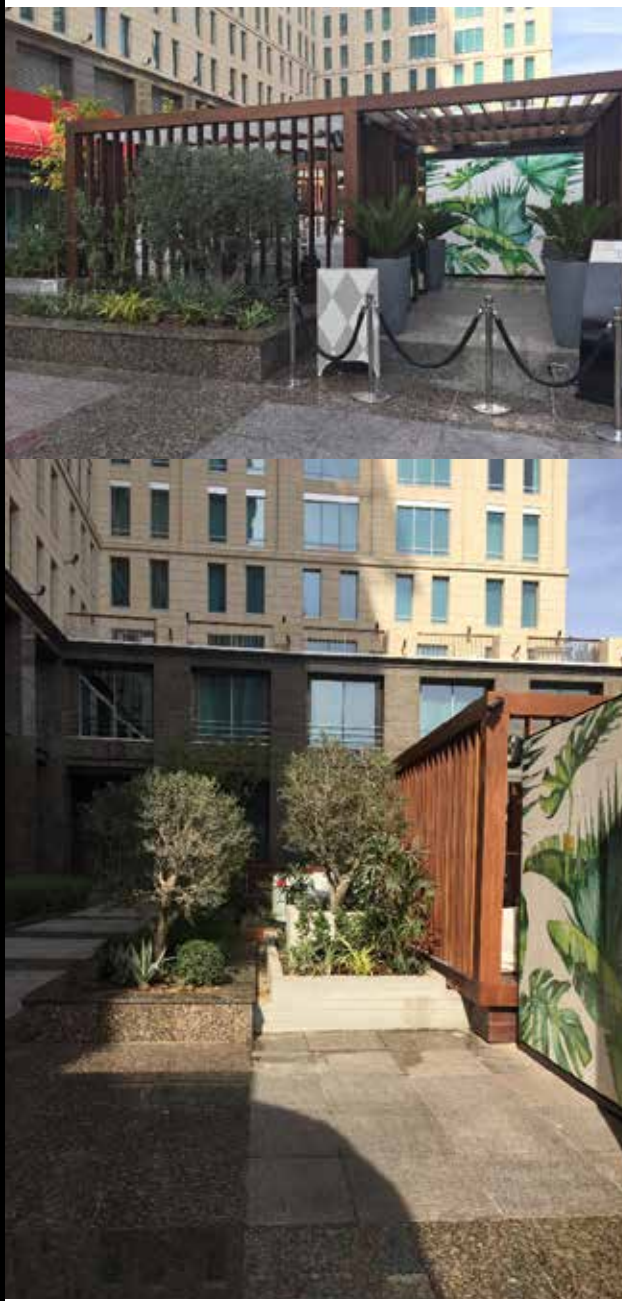


Scope: Pool, Lansdcaping Design  
& Built



# RITZ CARLTON HOTEL

DIFC, Dubai



Scope: Lansdcaping Design & Built

## Private Villa

Meydan, Dubai



Scope: Pool, Water Feature  
Landscape Design & Build



## Private Villa

Meydan, Dubai



Scope: Water Features & Landscaping  
Design & Built



## Private Villa

Meydan, Dubai



Scope: Pool & Landscaping  
Design & Build

## Private Villa

Medyan, Dubai



Scope: Lansdcaping Design & Built

## Marina Wharf Residence

Dubai Marina, Dubai - Value AED 1.2M



Scope: Swimming Pool &  
Landscape Design & Built



# Executed Projects

## Joint Venture

GMC TEAMS PREVIOUS EXPERIENCE IN SOME MAJOR PROJECTS							
NO	PROJECT NAME	CLIENT NAME	MAIN CONTRACTOR	CONSULTANT	COMPANY	CONTRACT TYPE	PROJECT VALUE
1	Anantara Palm Jumeirah & Tiara Residences	Zabeel Investments LLC	Dhabi Contracting	Dar Al – Handasah Shair and Partners	Emirates Watertech	<p>Hardscaping : wayerproofing work, artificial rocks, stamped concrete, stone, cladding, wooden pergolas, decking</p> <p>Softscape : drainage layers, sweet soil, plantation including a specimen big Royal Palms ( 9m OH),shrubs ,ground cover i ncluding Automatic irrigation system</p> <p>Water bodies: infinity edge Swimming pool ( 1000 sqm ), lazy river and water features including finishing and all MEP systems</p>	AED 36,000,000
2	Movenpick Hotel & Spa And Oceana Residences	Seven Tides	Arabtec	Dar Al – Handasah Shair and Partners	Emirates Watertech	<p>Hardscaping : waterproofing work, 200 sqm tunnels of artificial rocks, stone cladding tilling, wooden pergolas, decking</p> <p>Softscape: drainage layers, sweet soil, plantation including a specimen big Royal Palms ( 9m OH),exotic shrubs and ground cover including Automatic irrigation system</p> <p>Water bodies: infinity edge Swimming pool (1000 m<sup>2</sup>), 2000 m<sup>2</sup> of over following water features including finishing and all MEP systems</p>	AED 41,000,000
3	Desert Islands Sir Bani Yas Priority Projects	Tourism Development & Investment Company	Al Shafar Transport & Contracting Co. LLC	Atkins & Partners Overseas	Emirates Watertech	<p>Hardscaping : waterproofing work, floor finishing works, stone paving works, road and parking works</p> <p>Softscape: drainage layers, mulch, sweet soil, plantation (45,000m<sup>2</sup> including t ransplanting of existing plants), trees, shrubs and ground cover including Automatic irrigation system.</p> <p>Water bodies: Plunge Pools (700 m<sup>2</sup>), Dive Pool (200 m<sup>2</sup>)and stone water feature including finishing and all MEP systems</p>	AED 24,000,000

NO	PROJECT NAME	CLIENT NAMES	MAIN CONTRACTOR	CONSULTANT	CONTRACT TYPE	PROJECT VALUE AED
1	Reach British School	Reach British School	Nexcon development & Constructio	Firas Engg. Consultant	Semi Olympic Pool	1,000,000
2	Palm Views –East & West	Nakheel	SS Lootah Contracting Co.	Dar Al – Handasah Shair and Partners	Swimming Pool , Water Features & Landscaping Works	3,500,000
3	Palma Residences	Nakheel	Dubai Civil Engineering	Dar Al – Handasah Shair and Partners	Swimming Pool & Landscaping Works	2,500,000
4	Private Villa # 66– Marina –Abu Dhabi	HAMG Properties	Arabtec	Studio International Interior Design LLC	Swimming Pool + Jacuzzi + Water Features	750,000
5	Abu Dhabi Future School–Al Falah	ADEC	Dhabi Contracting	Dorsch Gruppe DC Abu Dhabi	Complete design, supply, delivery, installation, testing & maintenance and guarantee of irrigation pumps, planting irrigation system. All kinds of planting, tree transplanting. All types of paving including base/sub0base, concrete curbs, concrete slab, and concrete mowband, site furnishing, Swimmimg pool, waterproofingfinishes. Equipment and accessories and all associatedrequirements up to handing over	10,850,000
6	Al Bateen Wharf	Tourism Develop ment & Investme nt Company	Dhabi Contracting	Shankland Cox	Complete supply, fabrication, delivery, installation, guarantee and maintenance of irrigation pumps, planting, irrigation system, all kind of planting, tree transplanting, concrete paving, stonepaving, concrete curbs, concrete subslab, concrete mow band, metal fences, metal gates, site furnishing and boulders.	4,000,000
7	Abu Dhabi Future School– Yas Island	ADEC	Dhabi Contracting	Dorsch Gruppe DC Abu Dhabi	Semi Olympic Pool	850,000
8	W Hotel	Al Shara Investme nts	Al Futtaim Carillion	Holford & Associates	Supply and Installation of Hardscape Works, Softscape Works, Irrigation Works Water Feature Works + Swimming Pool works + Kids Pool Works	18,000,000
9	Ibn Battuta Mall Expansion–Hotel	Nakheel	Parkway Constructio	Dar Al Handasah Consultants	Scope: Swimming Pool, Kids Pool & Water Features, Hardscape works in a podiumfloor	2.200.000, 00



# Sir Baniyas Island

Abu Dhabi

AL YAMM PUBLIC POOL



AL SAHEL PUBLIC POOL



WATERSPORTS CENTRE POOL & LANDSCAPING



Scope: Pools, Hard & Soft  
Landscape Built

## Palm Views - East & West

Palm Jumeirah, Dubai



Scope: Swimming Pools, Water Features Hard & Soft Lansdcaping - Built

# Palma Residences

Palm Jumeirah, Dubai



Scope: Swimming Pools & Soft Landscaping Built



# Lake

Al Wathba, ABu Dahbi



Scope: Lake & Water Features (2000 M2)  
Design & Built

# Olympic Pool

Baniyas, Abu Dahbi



Scope: Olympic Pool Built

# Trade License / Authorities / Approvals



## رخصة تجارية Commercial License

تفاصيل الرخصة / License Details				
رقم الرخصة	706690			
اسم الشركة	جلف مودرن للمقاولات ش.ذ.م.م			
الاسم التجاري	جلف مودرن للمقاولات ش.ذ.م.م			
الشكل القانوني	ذات مسئولية محدودة			
تاريخ الإصدار	27/03/2014	Issue Date	26/03/2019	تاريخ الإنشاء
رقم الرخصة الأم	706690	Main License No	0	الرقم العالمي
عضوية الغرفة	232308	CCI No.	1133660	رقم السجل التجاري
Trade Name	GULF MODERN CONTRACTING L.L.C			
Legal Type	Limited Liability Company(LLC)			
Expiry Date	26/03/2019			
D&B D-U-N-S ® N	0			
Register No.	1133660			

الأطراف / License Members				
رقم الشخص/No.	الاسم / Name	الجنسية / Nationality	الصفة / Role	الحصص / Share
500272	فيكتور إدوار بو داجر	لبنان / Lebanon	مدير / Manager	

نشاطات الرخصة التجارية / License Activities	
Landscaping Works	تجميل الساحات الخارجية والداخلية
Steel Constructions Contracting	مقاولات تشييد الانشاءات المعدنية
Swimming Pools Installation	تركيب أحواض السباحة
Building Contracting	مقاولات البناء

العنوان / Address	
صندوق بريد	112366 P.O. Box
رقم القطعة	373-1358 Parcel ID
مكتب رقم 206	ملك عبدالله محمد علي الملا - البرشاء 1
Phone No	تليفون
Fax No	فاكس
Mobile No	هاتف متحرك

الملاحظات / Remarks	
( مقاولات بناء ارضي + 4 طوابق ) مقاولات تشييد الانشاءات المعدنية ( ارضي + اول ) لا يجوز البدء أو القيام بتنفيذ أية أعمال سواء تابعة لإشراف البلدية أو أي جهة أخرى في إمارة دبي وذلك لحين توفير المعايير المطلوبة	
تم إضافة نشاط تجميل الساحات الداخلية والخارجية و مقاولات تشييد الانشاءات المعدنية وتركيب أحواض السباحة في 18-12-2018	

رقم الإيصال	0	Receipt No.	تاريخ الطباعة	18/12/2018 9:27	Print Date
<p>يمكنك الآن تجديد رخصتك التجارية من خلال الرسائل النصية القصيرة، أرسل رقم الرخصة إلى 6969 (دو/التصالات) للحصول على إذن الدفع.</p> <p>Now you can renew your trade license by sending a text message (SMS). Send your trade license number to 6969 (Du/ Etisalat) to receive payment voucher.</p> <p>وثيقة إلكترونية معتمدة وصادرة بدون توقيع من دائرة التنمية الاقتصادية، لمراجعة صحة البيانات الواردة في الرخصة برجاء زيارة الموقع <a href="http://www.dubaided.gov.ae">www.dubaided.gov.ae</a></p> <p>Approved electronic document issued without signature by the Department of Economic Development. To verify the license kindly visit <a href="http://www.dubaided.gov.ae">www.dubaided.gov.ae</a></p>					

ملحق الشركاء  
Partners

تفاصيل الرخصة / License Details			
رقم الرخصة	706690	License No.	رقم الترخيص
D&B D-U-N-S No.	0		

أصحاب الرخصة / License Partners

الاسم / Name	الجنسية / Nationality	مسلسل الشخص / Sr. No.	الحصة / Share
HAITHAM ABDULRAHMAN OMAR عبد الرحمن العنابة	الإمارات / United Arab Emirates	124581	51.00000000%
VICTOR EDWAR BOU DAGHER فيكتور إدوار بو داجر	لبنان / Lebanon	500272	49.00000000%

Print Date: 18/12/2018 9:27 تاريخ الطباعة Receipt No. 0 رقم الإيصال

يمكنك الآن تجديد رخصتك التجارية من خلال إرسال الرسائل القصيرة أرسِل رقم الرخصة إلى 6969 (دبي/إتسالات) للحصول على إيصال الدفع.  
Now you can renew your trade license by sending a text message (SMS). Send your trade license number to 6969 (Dub/ Etisalat) to receive payment voucher.

وثيقة إلكترونية معتمدة وصادرة بدون توقيع من دائرة التنمية الاقتصادية. المراجعة صحة البيانات الواردة في الرخصة يرجاء زيارة الموقع [www.dubaided.gov.ae](http://www.dubaided.gov.ae)  
Approved electronic document issued without signature by the Department of Economic Development. To verify the license kindly visit [www.dubaided.gov.ae](http://www.dubaided.gov.ae)

شهادة شهر قيد شركة في السجل التجاري  
Commercial Register

تفاصيل السجل / Register Details			
رقم القيد	1133660	Register No.	رقم الرخصة الأم
Main Lice. Nr	706690		

Company Name	GULF MODERN CONTRACTING L.L.C	جلف مودرن للتقنيات ش.ذ.م.م
Legal Type	Limited Liability Company(LLC)	شركة ذات مسؤولية محدودة
Expiry Date	26/03/2019	تاريخ الانتهاء
D&B D-U-N-S No.	0	رقم الترخيص
Reg. Date	27/03/2014	تاريخ التسجيل

تفاصيل رأس المال / Capital Details

Nominated	1,000,000	الاسمي
Paid	1,000,000	المدفوع
No. of Shares	-1	عدد الأسهم
Currency	UAE Dirhams	العملة

عنوان الرخصة / License Address

مكتب رقم 206 شكك عبدالله محمد علي الملا - البرشاء 1

عنوان السجل التجاري / Commerce Address

مكتب رقم 206 شكك عبدالله محمد علي الملا - البرشاء 1

النشطة السجل / Register Activities

Building Contracting	مقاولات البناء
Steel Constructions Contracting	مقاولات تشييد المنشآت المعدنية
Landscaping Works	تجميل المناظر الخارجية والداخلية
Swimming Pools installation	تركيب أحواض السباحة

Print Date: 18/12/2018 9:27 تاريخ الطباعة Receipt No. 0 رقم الإيصال

يمكنك الآن تجديد رخصتك التجارية من خلال إرسال الرسائل القصيرة أرسِل رقم الرخصة إلى 6969 (دبي/إتسالات) للحصول على إيصال الدفع.  
Now you can renew your trade license by sending a text message (SMS). Send your trade license number to 6969 (Dub/ Etisalat) to receive payment voucher.

وثيقة إلكترونية معتمدة وصادرة بدون توقيع من دائرة التنمية الاقتصادية. المراجعة صحة البيانات الواردة في الرخصة يرجاء زيارة الموقع [www.dubaided.gov.ae](http://www.dubaided.gov.ae)  
Approved electronic document issued without signature by the Department of Economic Development. To verify the license kindly visit [www.dubaided.gov.ae](http://www.dubaided.gov.ae)

Dear Trader,  
Kindly take into consideration the following instructions

عزيزي التاجر:  
نرجو أخذ التعليمات التالية بعين الاعتبار

1. Do not practice a business activity without a license or permit.
2. Do not change the license location or relocate to another site without getting DED approval.
3. Make sure of having a trade name compliant to the name mentioned in the license.
4. Do not place sales, discounts or special offers without permission.
5. Do not make any amendments or changes in the license information unless you request DED approval.
6. Make sure of putting down prices on goods and commodities.
7. Make sure of putting down the date of production and expiry.
8. The consumer has the right to receive an invoice.
9. Announce the sale and purchase policy to the customer using suitable media (noting the replacement, repair and recovery policy)
10. Do not promote or sell or offer any counterfeited or fake goods.
11. Make sure of registering your trade mark at the Ministry of Economy for protection.
12. Report to the Department of Economic Development incidents regarding any counterfeited goods in the local market.
13. In the case of warehouse or store related to the licenses, kindly visit Permits section in our branches (Business Village, AlFowar or Dubai Mall) to get the necessary permission.
14. According to the decision no. 323 of 2012 issued by His Excellency the Minister of Labor all enterprises that employ UAE and GCC nationals have up to a maximum period of three months to register them with the Ministry of Labor.

1. عدم ممارسة النشاط في موقع بدون ترخيص أو تصريح.
2. عدم القيام بتغيير موقع الترخيص والانتقال إلى موقع آخر دون الحصول على موافقة الدائرة.
3. ضرورة أن يكون الاسم التجاري المدون على اللاصقة مطابق للاسم المدون بالترخيص.
4. عدم إجراء الترويجيات أو الخصومات أو العروض الخاصة بدون تصريح.
5. عدم إجراء أي تعديل أو تغيير بيانات الترخيص إلا بعد الرجوع للدائرة.
6. الالتزام بكتابة الأسعار على السلع والبضائع.
7. الالتزام بكتابة تاريخ الإنتاج وال انتهاء على السلع.
8. للتسليم الحق في الحصول على فاتورة الشراء.
9. الإعلان عن سياسة البيع للتسليم عبر وسيلة إعلان مناسبة شاملة (العلبة الإسترخاء أو الاستبدال أو الإصلاح لتسليم).
10. عدم القيام بالترويج أو البيع أو العرض أية بضائع مقددة أو مغشوشة.
11. الحرص على تسجيل العلامة التجارية بوزارة الاقتصاد بهدف حمايتها.
12. إبلاغ الدائرة في حالة وجود أي منتج أو بضائع مقددة في السوق المحلي.
13. في حال وجود مخزن أو مستودع تابع لترخيصه يرجى التكرم بزيارة قسم التصاريح فرع قرية الأعمال أو الطوار أو دبي مول للحصول على التصريح اللازم.
14. بناء على قرار معالي وزير العمل رقم 323 لعام 2012، على جميع المنشآت التي توظف مواطنين من دولة الإمارات و دول مجلس التعاون أن تقوم بتسجيلهم لدى وزارة العمل خلال مدة أقصاها ثلاثة شهور.

رقم الإيصـال: 0 Receipt No. تاريخ الطباعة: 18/12/2018 9:27 Print Date

يتمكّن الآن تجديـد رخصـتكم التجـارية من خـلال الرـسائل النصـية القصـيرة، أرسـل رقم الرخصة إلى 6969 (دو إيسالـات) للحصول على أذن البيع.

Now you can renew your trade license by sending a text message (SMS). Send your trade license number to 6969 (Dul Eissalat) to receive payment voucher.

وثيقة إلكترونية معتمدة وصادرة بدون توقيع من دائرة التنمية الاقتصادية، لمرافعة صحة البيانات الواردة في الرخصة برجاء زيارة الموقع [www.dubaided.gov.ae](http://www.dubaided.gov.ae)

Approved electronic document issued without signature by the Department of Economic Development. To verify the license kindly visit [www.dubaided.gov.ae](http://www.dubaided.gov.ae)



## ترخيص بناء جديد

(رضعاً وبنيم)

إدارة المباني  
قسم تراخيص البناء

رقم الترخيص	252493 - 4 - 2	تاريخ الإصدار	03/03/2015	تاريخ الطباعة	03/03/2015
اسم المالك	محمد احمد بن سليم	اسم المنطقة الجديد	أم سقم الأولى		
رقم الأرض	3560178				
نوع الرخصة	تقديم نهائي مبنى جديد	نوع المبنى/عدد المباني	فيلا خاصة-1		
عدد الأدوار	1B+ G + 1	استعمالات المبنى	خدمات خارجية + خدمات داخلية + فل		
وصف العمل	فيلا سرداب + أرضي + أول + كراج ملاصق + مسبح				
الاستشاري	جوزي للاستشارات الهندسية	رقم الرخصة	118162		
المقاول	جلف مودرن للمقاولات ش.م.ح	رقم الرخصة	706690		
المقاول للتقوي		رقم الرخصة			
قيمة الرسوم	3353	رقم الإيصـال	201500116655	التاريخ	03/03/2015
قيمة تأمين المقاول	8216	رقم الإيصـال	201500116651	التاريخ	03/03/2015
التجديدات	التجديد	الرقسم		التاريخ	
اشتراطات خاصة	استكمال اعتماد مخططات الدفاع المدني من خلال النظام الإلكتروني قبل صب سقف الطابق الأرضي (قبل صب سقف الطابق) مرأعة تصميم السور بحيث يؤخذ في الاعتبار فروق منسوب الأرض (قبل بدء العمل) تسمية مقاول الباطن المعتمد للخرسانة مسبقة الشد (قبل بدء العمل) تقديم حسابات السخانات الشمسية والمواصفة على عمق الوصلة النهائية (قبل صب سقف الطابق) (B1) للمبنى رقم (1) يجب مراجعة قسم إنفاذ الشرائع بلدية دبي قبل التنفيذ هاتف رقم 20644511 (قبل بدء العمل) للمبنى رقم (1)				



- الملاحظات العامة:
1. يسمح للمقاول المالكين بقبول مخططات المصعدة مع هذا الترخيص مع الالتزام بالقرارات والأمان والسلامة بموقع العمل.
  2. على الترخيص إذا لم يتم العمل خلال ستة أشهر من تاريخ الإصدار أو إذا توقف العمل كلياً في الموقع لمدة تزيد عن ستة أشهر.
  3. يجب إكمال الأعمال وفقاً للقوانين الخاصة بقبول مخططات المصعدة:
  4. أن الاستدراك قد كونهت كالتعليق التقني "أن الاستدراك قد كونهت حتى مستوى سطح الأرض أو عدة كتيبات" مع العلم كبناء "أن تطلعات الإنشـاء جـداً"
  5. عند حدوث تغييرات في المخططات (مستندات) اختلاف في المصوب المرحلي في المبني أو الموقع أو المبني المصوب "في حالة التطور على مواد أو عند"
  6. "على المقاول الحصول على شهادة الإنجاز وإغلاق الأعمال المعلقة واستمرارية العمل عند الانتهاء من كل مرحلة العمل المخصصة"
  7. "على المقاول الحصول على الرخصة قبل البدء في العمل"
  8. "على المقاول الحصول على الرخصة قبل البدء في العمل"
  9. لا يسمح ببيع المبني بكون لا تتسم مع القيد المصطبة المصطبة بالموقع

مدير إدارة المباني

هاتف: 044999 (2232323) فاكس: 044999  
رئيساً: د. محمد بن محمد  
صفحة 1 من 2





## ترخيص أعمال تعديلات

إدارة المباني  
قسم تراخيص البناء

رقم الترخيص	306618 - 3 - 4	تاريخ الإصدار	14/06/2017	تاريخ الطباعة	14/06/2017
اسم المالك	ديراج وانوان	رقم الأرض	3920401	اسم المنطقة	مرسى دبي
نوع الرخصة	ترخيص أعمال تعديلات وإضافات بسيطة (ملاك)	نوع المبنى/ عدد المباني		استعمالات المبنى	
وصف العمل	تعديل بسيط في تجميل الساحة الخارجية بالمطابق للثالث	رقم المبنى المعمل	1		
الاستشاري		رقم الرخصة			
الشركة المنفذة	جلف مودرن للمقاولات ش.م.م	رقم الرخصة	706690		
المقاول الثانوي		رقم الرخصة			
قيمة الرسوم	241	رقم الإيصال	201700318545	التاريخ	14/06/2017
قيمة تأمين المقاول	500	رقم الإيصال	201700318543	التاريخ	14/06/2017
التجديدات	التجديد	الرقم		التاريخ	
إشترائط خاصة					



مدير إدارة المباني

هاتف طوارئ البلدية: (2232323) (8004999).  
رويتنا: مهلتنا حلم العالم  
صفحة 1 من 1



## ترخيص أعمال تعديلات

إدارة المباني  
قسم تراخيص البناء

رقم الترخيص	332674 - 2 - 2	تاريخ الإصدار	16/08/2018	تاريخ الطباعة	16/08/2018
اسم المالك	حكومة دبي - مؤسسة دبي العقارية - LESSEES مدرسة الشارقة الامريكية الدولية الخاصة - مدرسة	رقم الأرض	4210702	اسم المنطقة	الورقاء الأولى
نوع الرخصة	ترخيص أعمال تعديلات وإضافات بسيطة (ملاك)	نوع المبنى/ عدد المباني		استعمالات المبنى	
وصف العمل	تعديل على حوض السباحة	رقم المبنى المعمل	1		
الاستشاري		رقم الرخصة			
الشركة المنفذة	جلف مودرن للمقاولات ش.م.م	رقم الرخصة	706690		
المقاول الثانوي		رقم الرخصة			
قيمة الرسوم	272	رقم الإيصال	201800320687	التاريخ	16/08/2018
قيمة تأمين المقاول	500	رقم الإيصال	201800320667	التاريخ	16/08/2018
التجديدات	التجديد	الرقم		التاريخ	
إشترائط خاصة					



مدير إدارة المباني

هاتف طوارئ البلدية: (2232323) (8004999).  
رويتنا: مهلتنا حلم العلم  
صفحة 1 من 1



بلدية دبي  
DUBAI MUNICIPALITY

**ترخيص أعمال تعديلات**

**إدارة المباني**  
**قسم ترخيص البناء**

رقم الترخيص :	310241 - 1 - 2	تاريخ الإصدار :	06/08/2017	تاريخ الطباعة :	06/08/2017
اسم المالك :	مجموعة ميدان - ش.ذ.م.				
رقم الأرض :	6183777	اسم المنطقة :	ند الشبا الأولى		
نوع الرخصة :	ترخيص أعمال تعديلات وإضافات بسيطة (استشاري، مقاول)				
نوع المبنى/عدد المباني :	استعمالات المبنى				
وصف العمل :	إضافة حمام سباحة				
رقم المبنى المعمل :	6				
الاستشاري :	الوطن العربي للاستشارات الهندسية	رقم الرخصة :	579822		
الشركة المنفذة :	جلف مودرن للقرارات ش.ذ.م.	رقم الرخصة :	706690		
المقاول الثانوي :	رقم الرخصة :				
قيمة الرسوم :	272	رقم الإيصال :	201700374942		
قيمة تأمين المقاول :	500	رقم الإيصال :	201700407685		
التجديدات :	التجديد	الرقم :	التاريخ		
<b>إشراطات خاصة :</b>					



مخططات معتمدة  
Approved Drawings  
06/08/17  
6183777  
310241-1-2

1. يصبح المقاول المنفذ ملزمًا بمطابقة المخططات المعتمدة مع "مخطط الترخيص" مع الالتزام بقواعد البناء والسلامة بموقع العمل.

2. يلزم الترخيص إذا تم البدء بالعمل خلال سنة الترخيص من تاريخ الإصدار أو إذا تم العمل فعلياً في الموقع لمدة تزيد عن ستة أشهر.

3. على المقاول إخطار المصالح المختصة وإصدار شهادة الالتزام واسترداد التأمين عند الانتهاء من العمل.

4. يجب إخطار قسم المقاولين في حال حدوث أي تغييرات أو أضرار في الأرض أو الممتلكات أو الجوار.

5. يجب إخطار أقسام الأمن والحماية في الموقع وإشراطات الخاصة بالبناء.

6. على المقاول إزالة الأثاث ومختلفات العمل والمحافظة على نظافة الموقع والجوار.

7. على الاستشاري والمقاول الرئيسي التمسك بأن كافة المقاولين الفرعيين لديهم رخص مناسبة للمقاول في أعمالهم.

8. كإخطار على كافة الشركات والمقاولين المعتمدة في الموقع مع الالتزام بالخطط والخطط.

9. في حال وجود الممتلكات على المقاول تلبية لأصليها وفقاً للمعلومات الهندسية وتحت إشراف مهندس إداره أو إخطار المبنى عن أرضي "أ" أو "ب".

10. لا يسمح بصنع المبنى يكون كالتصميم مع الهيئة المحيطة بالمحطة بالموقع.

**مدير إدارة المباني**

هاتف طوارئ البلدية: (2232323) (8004999).

رؤيتنا: "مبانينا حلم العالم"

صفحة 1 من 1



• ENGINEERS  
• PLANNERS  
• CONSULTANTS

إس. دبليو. ول. عمار  
SOUTHWEST  
ARCHITECTURE

Dubai, 5<sup>th</sup> May 2018

Project: Dubai Hills Villa

Plot: Fairway-Plot 6310169-Dubai Hills-Dubai

Subject: Landscaping Contractor Approval

Dear GMC's PM,

This is to confirm that after reviewing the documents received from the contractor, we approve Gulf Modern Contracting L.L.C. to perform the Landscaping and Swimming Pool works in the above-mentioned Project.

Drawings and materials to be submitted to the Client/Consultant for final approval prior of starting the works.

This is for your information and further action,

Regards,



Bchara Abouchakra  
General Manager  
SWA Southwest Architectural Design Consultancy  
050 8801980

Unit 1802 Floor 18 Lake Central Tower  
Al Abraj Street PO Box 888088  
Business Bay, Dubai, UAE  
Phone: +97145527721



**Axiata Jouzy**

# Request For Material Approval



Project Title : Al Manara Villa and Car Museum Client : Dr. Mohammad Bin Sulayem		Contractor : Gulf Modern Contracting LLC	
Submittal Ref No M-SUB-DX-02-038 rev. 1	Revision 0	Date of Submittal 27-JUL-15	Work Package No.
Material Title : SWIMMING POOL, JACUZZI, SAUNA & STEAM – MEP EQUIPMENT		Drawing Ref No:	B o Q Ref No:
Supplier / Subcontractor Name: Gulf Modern Contracting LLC Landscaping		Subcontractors Ref No.	
Contact Person:		Tel : 04-8829484 Fax: 04-8829585	
Manufacturers Name & Country of Origin: UAE			

No	Description - Specified	Description - Proposed
		SWIMMING POOL, JACUZZI, SAUNA & STEAM – MEP EQUIPMENT
		-Technical Data
		-CD
		In compliance to the comments on M-SUB-DX-02-038 rev. 0
		Gulf Modern Contracting Landscaping Ref# VCM-PTS-MTS-M-01

Attachments:	1- Product data/ Catalog	X	2- Specification		3- Samples		4- Others	
--------------	--------------------------	---	------------------	--	------------	--	-----------	--

Prepared by (Contractor) Name : Gulf Modern Contracting Date: _____ Signature: _____		Reviewed by MEP Coordinator Name: _____ Date: _____ Signature: _____		Received by Consultant Name: Axiata-Jouzy Date: _____ Signature: _____	
Reviewed by Engineering Manager NADIRA BEAYNI Signature: _____		Approved for Submittal by Project Director Signature: _____			

For Use By Consultant:  
Comments:

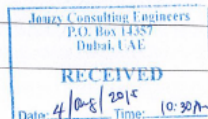
Material Generally is Approved Subject to the following:  
 ① Interior design Approval  
 ② Shop drawing with all details and components as per DM Requirement & requirement.

Approval Status	A	Approved	B	Implement Exceptions Noted	C	Revise & Resubmit	D	Rejected
Consultant	Signature: Hazem Abu Shabab				Client			
Signature	Signature: _____				Signature			

Note: The above comments / or approval does not relieve the Contractor from his obligation in the contract to ensure conformance to the specification. Any Deviations found subsequent to the approval are to be corrected by the contractor to the satisfaction of the Client / Consultant.

CC: Client: 1 copy (With All Attachments) ☐ (Cover Page only) ☐

Received By the Contractor – One copy with Attachment	Signature: _____	Date: _____
---	------------------	-------------



15<sup>th</sup> September 2018

Project: Nadd Al Shiba Villa

Site: Plot Number 6150569 -Dubai,UAE

Subject: Landscaping Contractor Approval

Dear GMC's PM,

This is to confirm that after reviewing the documents received from the contractor, we approve Gulf Modern Contracting LLC. to perform the Landscaping and Water Feature works in the above-mentioned Project.

Drawings and materials to be submitted to the Client/Consultant for final approval prior of starting the works.

This is for your information and future action,

Regards,

Sho Ikeya I Architect

*[Signature]*

**ibda | ايدا | design**

Ibda Design and Interior CO.LLC  
P.O.Box 6999, Dubai, UAE



GMC considers the surrounding environment and safety of its employees a major part of their responsibility and to properly discharge this responsibility, our main goal is to achieve a Zero accident in all projects of the company.

GMC shall establish Environmental and Health Safety objectives and targets, implement programs to achieve these and continually measure and monitor its activities and progress against the committed objects.

The company is concerned with occurrence of accident, which are primary failure in the company's operational procedures and as such are costly. It is imperative that each employee is fully aware of the company's policy with respect to the prevention of accidents and environment friendliness.

This includes the conservation of natural resources and energy, reduction of waste and prevention of pollution, through proficient management and by adopting best practices where appropriate.

The following prevention policy has been established:

- The company, its management and supervisors will use only safe operational procedures and develop safe working attitude and habits.
- Any employee of the company who continually works in unsafe manner and does not follow safe operating procedures will be imposed to strict measures against him for his own benefit and the benefit of others.
- To eliminate the waste of resources so as to conserve the environment and make the best use of available resources.
- To utilize every opportunity to recycle the resources
- To implement an effective waste management procedure
- The company shall provide resources and endeavor to lead, motivate and encourage prevention principals and environmental stewardship ethics.

It is everyone responsibility to assure the job is accomplished in as safe and environment friendly manner as possible. Individuals are responsible for promoting safe operations. Due care and attention will be given to property, equipment and environment areas.

GMC views integrated accident prevention and safety program as prime importance on each of the Company has designed this safety program with set standards, procedures and guidelines following the regional laws and all the important safety standards currently followed widely.

GMC is committed to continually improve its Environmental performance and to communicate result with all stakeholders in order to maintain a relationship based on honesty, openness and mutual trust.

Approved:   
DEC. 2011 

# HSE Policy

## 1. HSE Policy Statement

The Top Management of M/S GMC (Main Contractor) is committed to provide a safe and healthy working environment to all its workers and sub contractors. The main contractor has implemented a pro active HSE system to achieve the occupational health and safety objectives of the project by identifying work place hazards and reducing the inherent risks to manageable levels, thereby avoiding accidents and consequential costs and liabilities due to accidents.

The occupational HSE implications are considered in all business and activities and decision making.

The Top Management believes that Health, Safety, Personnel, Engineering, Production, Quality and Finance are of equal importance to all main contractors operations.

Personal injuries, property loss, environmental incidents are preventable if HSE issues are an integral part of all business activities, thus significantly contributing to the ultimate benefit of the project.

The Top management will clearly demonstrate the importance and the significance of sound HSE objectives

Main contractors Top Management ensures the deployment of adequate financial and physical resources to educate train and motivate employees to meet this commitment

Compliance with the main contractor's policy, applicable law, standards and industrial codes is the responsibility of all employees of main contractor and the sub contractor and is a condition of their employment.

## 2. Objective

The e objective of the plan is to avoid accidents causing injury to personnel or damage to property by ensuring that the various groups and individuals who are present on the jobsite are aware of their HSE responsibilities. Each individual on the jobsite must do the best to ensure that all sources of danger are reduced to manageable levels not only to protect his own life, health and material possessions, but as importantly to prevent harm from occurring to colleagues. Every person has a right to have his life and health respected and his property protected.

## 3. HSE Planning

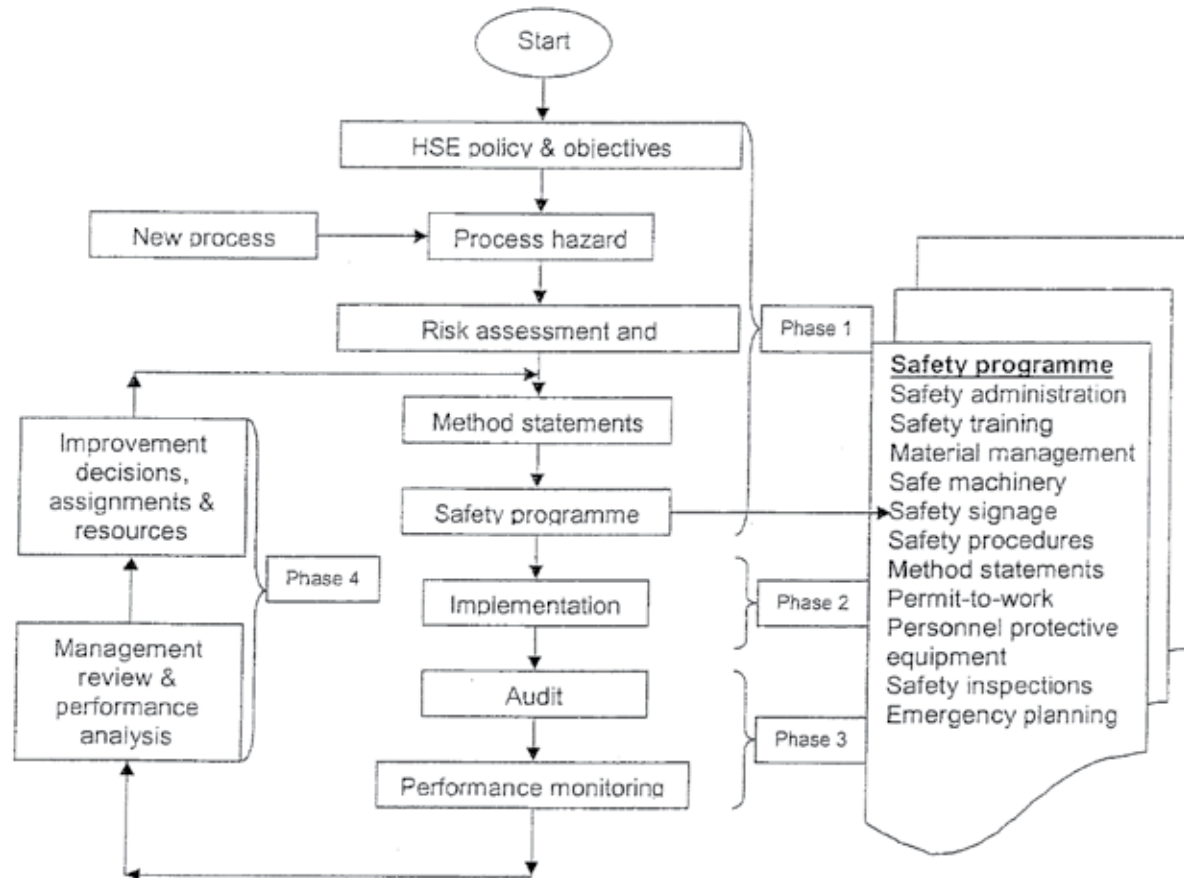
The HSE plan shall manage hazards using the four phase process of:

HSE engineering, whereby the risks are assessed and methods formulated to reduce risks to tolerable levels

HSE administration and implementation where the arrangements, methods and procedures , such as permit to work and hot work permit procedures , plus recourses such as safe plant , equipment and materials are provided and personnel are trained to use them. The arrangements, methods and procedures including inspection, audit and emergency procedure are then implemented.



#### 4. HSE Plan for continual improvement



## 5. HSE Awareness Training

HSE awareness training shall consist of induction training to personnel joining the project followed by regular refreshment training sessions during tool box meetings when the safety topics of the job in hand are explained and discussed.

Induction Meeting Topics,

At the start of the meeting a list of attendees shall be prepared including the name of the person presenting the information and the language used.

At the conclusion of the session, a leaflet will be distributed to the attendees.

The leaflet will explain the main contractors HSE policies. In order to ensure easy understandings of the HSE policies and requirements, the information shall be presented using pictures and diagrams as far as possible.

A system of gate passes will be developed in such a way that the passes will not be valid if the employees did not attend the induction meeting within 24 hours following commencement of work in site.

## 6. Induction Meeting Topics

While welcoming the newcomers to the site, the main contractor's Safety Officer should address the following points

- Responsibility of management and supervision
- Main contractors HSE policy
- Health and welfare facilities
- Hazard identification and risk assessment
- Pattern of work, movement of materials, direction of movement etc
- Warning signs and signals.
- Special processes, materials, precautions and restrictions
- Safety equipment, PPE and clothing and use of the same
- Good house keeping

- Permit to work system
- Reporting hazards
- Emergency (fire procedures, drills, alarms, escape routes)
- First aid procedures and reporting of accidents
- Machinery hazards
- Introduction to supervisors.
- Security
- Working at heights
- Employees responsibilities

## 7. Accident Investigation and Reporting

The main contractors Project Director shall,

Ensure that all engineers, supervisors and foremen report all injury, damage, accident and near miss events

Take corrective action with any supervisor, craft or group having an unsatisfactory accident records.

Advise top management of any accident in a timely manner

Report fatalities immediately to the Top Management

The Safety Officer shall,

Establish and keep up to date the reporting and record system for the site

Immediately inform the Top Management of any serious event

Ensure that all injury, damage, near misses and accidents are investigated

Raise an incident report for any non conformance arising from incidents, near miss, accident etc

Perform statistical analysis and publicize the results as necessary

Perform a monthly HSE report to the Top Management as well as to the Project manager

Use all accident information to include lessons learned within corrective actions to prevent recurrence of any similar situation.

# Quality Policy

PERMIT TEAMWORK TO PROVIDE HIGH QUALITY PRODUCTS TO OUR VALUABLE CUSTOMERS AS PER THEIR REQUIREMENTS ON TIME, EVERY TIME.

## OBJECTIVES

- Usage of best raw materials.
- Quality checking at every stage .
- Cover all safety, health and environmental issues.
- Immediate action upon customer complaints
- Adoption of up date know how for the enhancement of performance.





## GMC UAE

DUSSELDORF TOWER  
AL BARSHA, FLOOR 2, OFFICE 206  
Dubai, U.A.E.  
Tel. 7706 427 (4) 971+  
Fax 4454 360 (4) 971+



## GMC ALGERIA

CENTER COMMERCIAL AFAK 1, OUED  
EL KERMA, GU DE CONSTANTINE,  
ALGER, ALGERIE  
TEL 451919 (21) 213+  
FAX 452222 (21) 213+

[info@gmc-co.com](mailto:info@gmc-co.com)  
[www.gmclandscaping.com](http://www.gmclandscaping.com)